



NEEDLE

BLACKFOREST GIN

**BLACK FOREST
SPRUCE NEEDLES**

**FOR THE ABSOLUTE
NEEDLE GIN
EXPERIENCE**

All you need



Gin production has a long tradition in the Black Forest. Our recipe, for instance, dates back to the year 1799. Our master distillers have managed to breathe new life into this recipe. The rarely used single-batch distillation method enables us to test each

individual batch separately for absolute perfection and thus guarantees the extra distinction of our Needle Gin. The spicy air of the Black Forest and the use of local "hand-picked botanicals" – such as spruce needles – are the crowning glory of our Needle Gin.

No. 1 GIN FROM GERMANY

**REGIONAL,
HANDMADE,
FROM THE BLACK FOREST**

**TEN DIFFERENT
BOTANICALS,
incl. hand-picked
Black Forest spruce needles**

**CERTIFIED,
CO2-NEUTRAL DISTILLATION
no fossil fuels**

RRP € 12.99

**UNIQUE
PRICE PERFORMANCE RATIO
ATTRACTIVE MARGIN**

**SUPPORT
VIA DISPLAYS AND
SALES PROMOTION**

Needle Distilled Dry Gin Black Forest



Order number	85NEG6
Bottle size	0.11
% vol	40
GTIN / container	42359890
GTIN / carton	42372868
GTIN / display	
Bottle / carton	8
Carton / pallet	418



4 237 2868

Order number	85NEM6
Bottle size	0.5 l
% vol	40
GTIN / container	42333432
GTIN / carton	42333449
GTIN / display	
Bottle / carton	6
Carton / pallet	105



4 233 3449

Order number	85NEP6
Bottle size	1.0 l
% vol	40
GTIN / container	42357179
GTIN / carton	42357186
GTIN / display	
Bottle / carton	6
Carton / pallet	80



4 235 7186

Order number	85NER6
Bottle size	3.0 l
% vol	40
GTIN / container	4000526000047
GTIN / carton	4000526000528
GTIN / display	
Bottle / carton	1
Carton / pallet	80



4 000526 000528

Needle Distilled Dry Gin & Tonic Can



Order number	85NDK9
Bottle size	0.33 l
% vol	10
GTIN / container	42374886
GTIN / carton	4000526000160
GTIN / display	
Can / tray	12
Tray / pallet	126



4 000526 000160

Needle on-pack (incl. gin & tonic can) Distilled Dry Gin Black Forest

Order number	98NOM6
Bottle size	0.5 & 0.33 l
% vol	40 & 10
GTIN / container	4000526000498
GTIN / carton	4000526000504
GTIN / display	
Bottle / carton	6
Carton / pallet	44



4 000526 000504



Needle presentation carton (incl. glass)



Order number	85NGM6.1
Bottle size	0.5 l
% vol	40
GTIN / container	42359869
GTIN / carton	4000526151527
GTIN / display	
Bottle / carton	3
Carton / pallet	56



4 000526 151527

Needle display presentation carton (18 presentation cartons & 24 0.5l bottles)

Order number	98NEM6D
Bottle size	0.5 l
% vol	40
GTIN / carton	4000526151527
GTIN / display	4000526120165
Bottle / display	42
Display / pallet	4



4 000526 120165



Needle display unmixed (48 bottles)



Order number	85NEM6D
Bottle size	0.5 l
% vol	40
GTIN / carton	4000526120158
GTIN / display	42333432
Bottle / display	48
Display / pallet	4



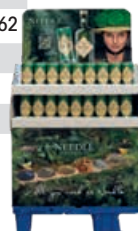
4 000526 120158

Needle Gin & Tonic Can Display (72 cans)

Order number	85NDK9D
Bottle size	0.33 l
% vol	10
GTIN / carton	4000526000962
GTIN / display	42374886
Can / display	72
Display / pallet	4



4 000526 000962



Needle display on-pack (48 needle on-packs)

Order number	98NOM6D
Bottle size	0.5 & 0.33 l
% vol	40 & 10
GTIN / carton	4000526000504
GTIN / display	42374886
Bottle / display	48
Display / pallet	4



4 000526 000511

